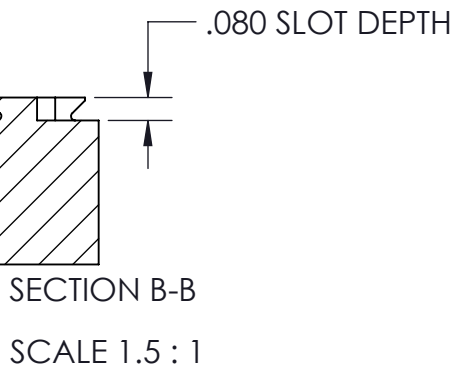
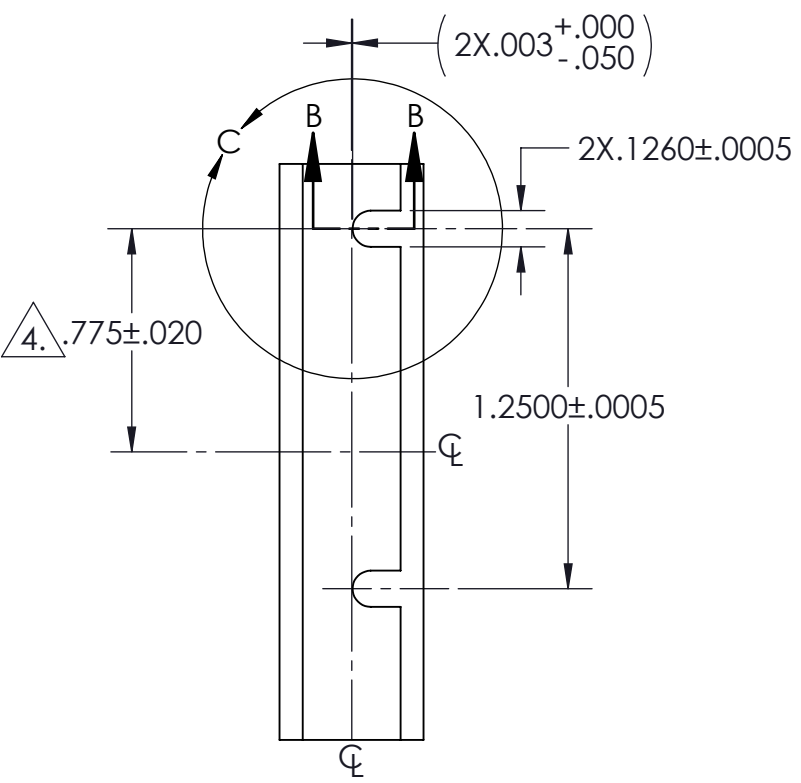
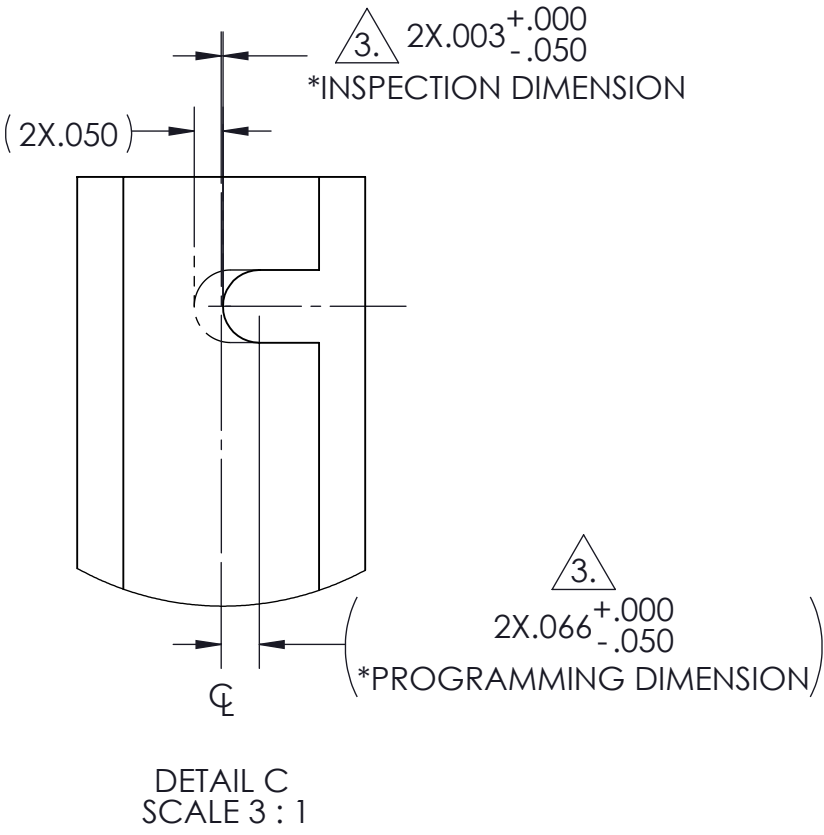
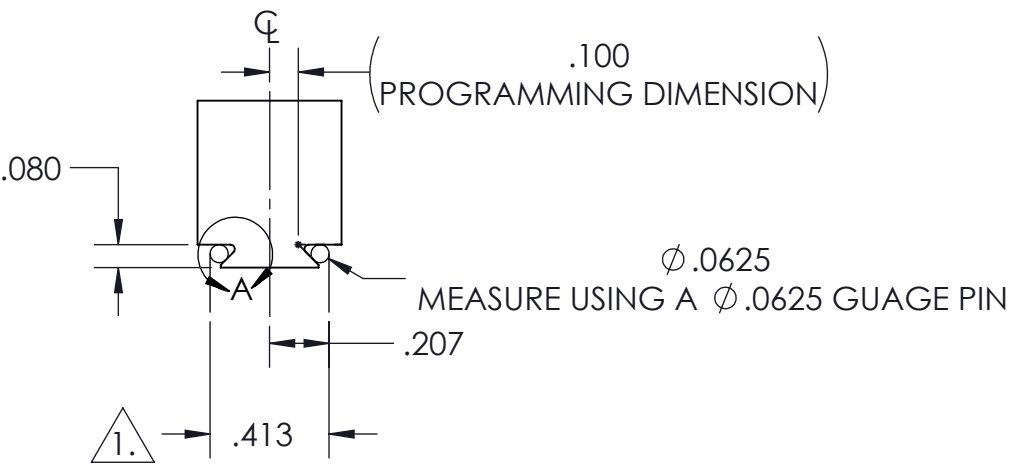
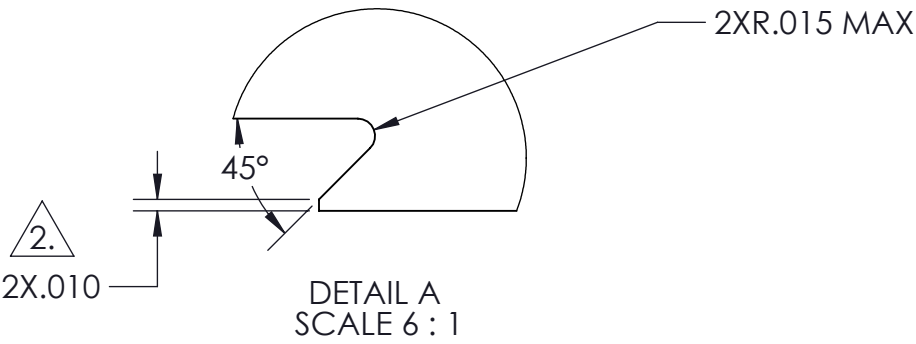



NOTES:

- 1. DOVETAIL WIDTH WILL NOT WILL NOT CHANGE WITH VARYING DOVETAIL DEPTH.
- 2. MACHINE EDGE BREAK ON DOVETAIL POINT.
- 3. SLOT DIMENSION TO THE CENTERLINE IS **CRITICAL**, IF DIMENSION IS TOO LARGE, STOCK MAY REST AGAINST LOCATING PIN INSTEAD OF DOVETAIL CUT SURFACES.
- 4. IF STOCK IS OVERSIZE, THIS TOLERANCE INCREASES BY HALF OF THE EXTRA STOCK.

DUAL05125 DOVETAIL STOCK PREPARATION



INCH DRAWN IN ACCORDANCE WITH ASME Y14.5-2009		TOLERANCES UNLESS OTHERWISE SPECIFIED				WWW.FIFTHAXIS.COM 7140 ENGINEER ROAD SAN DIEGO, CA 92111 P (858) 505-0432 F (858) 505-9344	
PROPRIETARY AND CONFIDENTIAL		X ± 0.1 .XX ± 0.01 .X ± 0.05 .XXX ± 0.005 ANGULAR ± 0.5°		DESCRIPTION		DUAL05125 DOVETAIL STOCK PREP	
THE INFORMATION CONTAINED IN THIS DRAWING IS THE SOLE PROPERTY OF FIFTH AXIS, INC. ANY REPRODUCTION IN PART OR AS A WHOLE WITHOUT THE WRITTEN PERMISSION OF FIFTH AXIS, INC. IS PROHIBITED.		THIRD ANGLE PROJECTION		SIZE		PART NO.	
				B		DSP-DUALD05125	
				DO NOT SCALE DRAWING		SCALE 1:2	
				WEIGHT:		SHEET 1 OF 1	