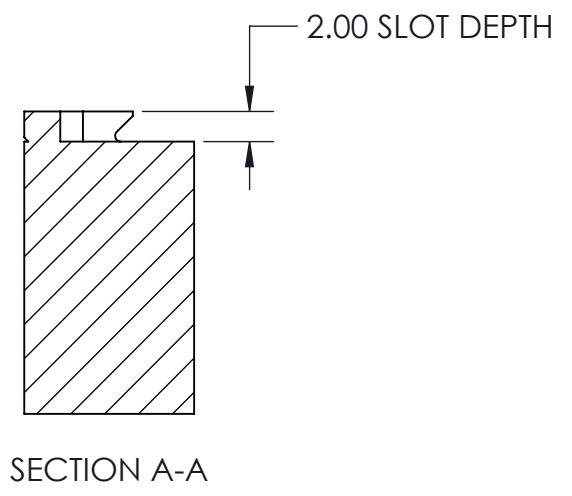
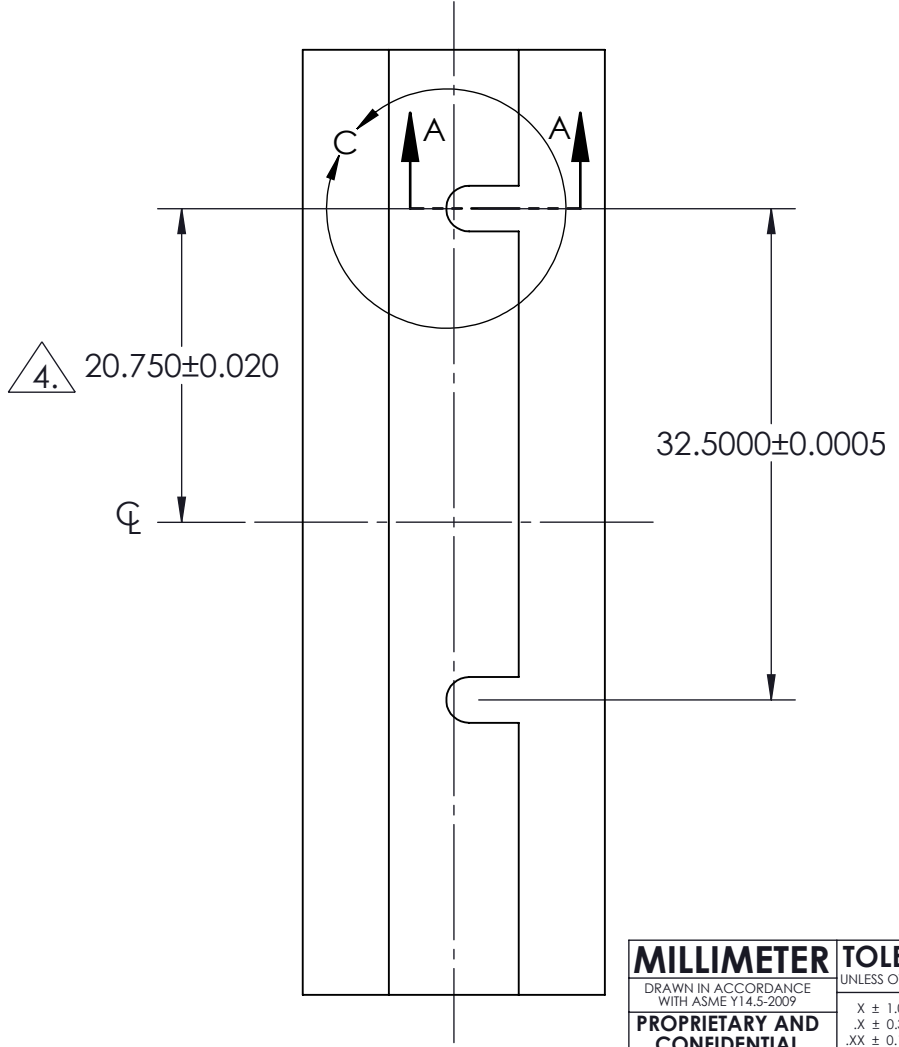
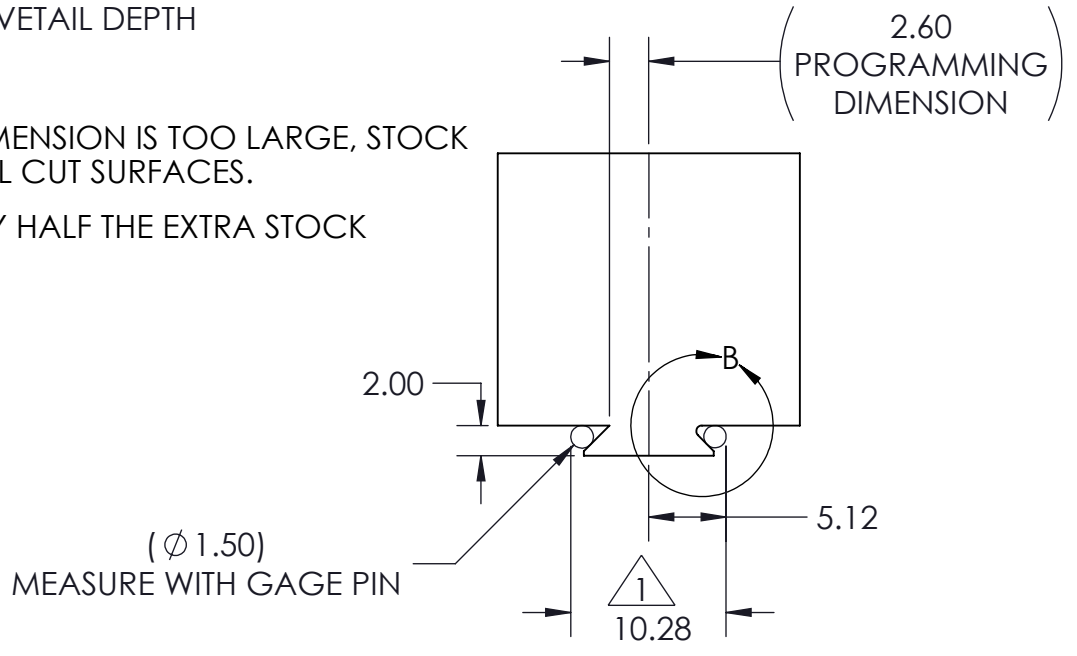
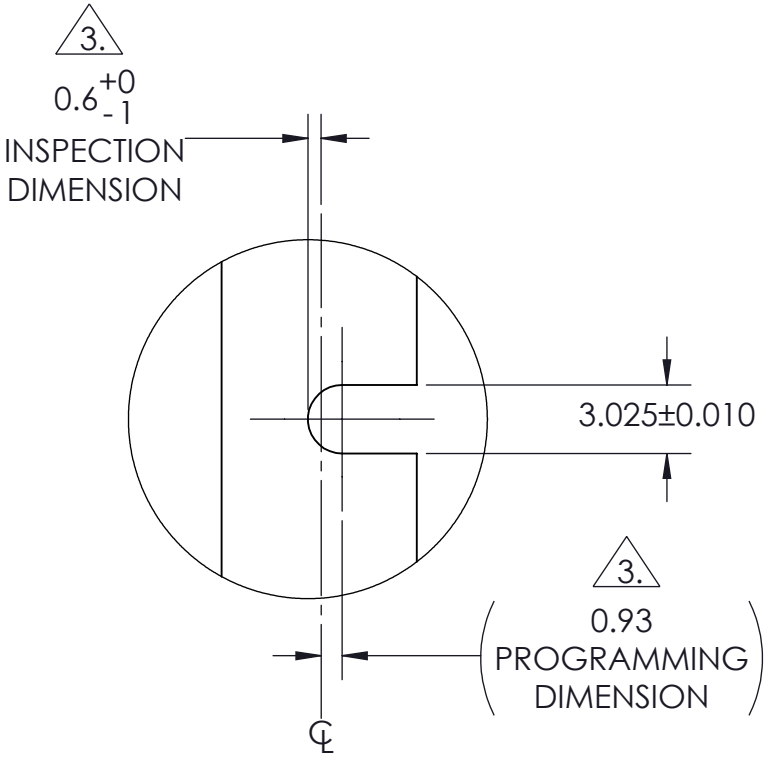
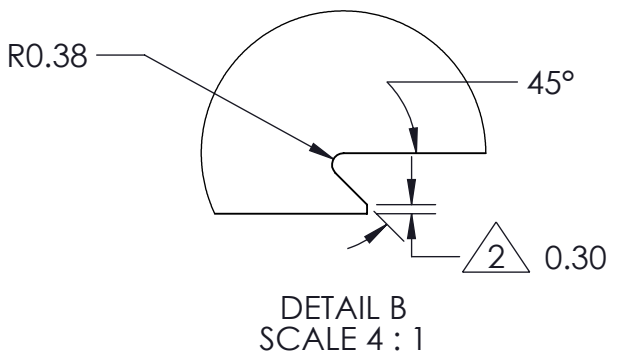


NOTES:

1.
- DOVETAIL WIDTH WILL NOT CHANGE WITH VARYING DOVETAIL DEPTH
2.
- MACHINE EDGE BREAK ON DOVETAIL POINT
3.
- SLOT DIMENSION TO THE CENTERLINE IS **CRITICAL**, IF DIMENSION IS TOO LARGE, STOCK MAY REST AGAINST LOCATING PIN INSTEAD OF DOVETAIL CUT SURFACES.
4.
- IF STOCK IS OVERSIZED, THE TOLERANCE IS INCREASED BY HALF THE EXTRA STOCK



DM12X2 DOVETAIL STOCK PREPARATION

MILLIMETER

DRAWN IN ACCORDANCE WITH ASME Y14.5-2009

PROPRIETARY AND CONFIDENTIAL

THE INFORMATION CONTAINED IN THIS DRAWING IS THE SOLE PROPERTY OF FIFTH AXIS, INC. ANY REPRODUCTION IN PART OR AS A WHOLE WITHOUT THE WRITTEN PERMISSION OF FIFTH AXIS, INC. IS PROHIBITED.

TOLERANCES

UNLESS OTHERWISE SPECIFIED

X ± 1.0	ANGULAR ± 0.5°
.X ± 0.3	
.XX ± 0.13	

THIRD ANGLE PROJECTION

WWW.FIFTHAXIS.COM
7140 ENGINEER ROAD
SAN DIEGO, CA 92111
P (858) 505-0432 F (858) 505-9344

DESCRIPTION

DUALDM12 DOVETAIL STOCK PREP

SIZE

B

PART NO.

DSP-DM12X2

REV

A

DO NOT SCALE DRAWING

SCALE 2:1

WEIGHT:

SHEET 1 OF 1