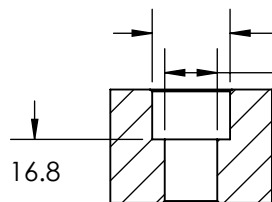
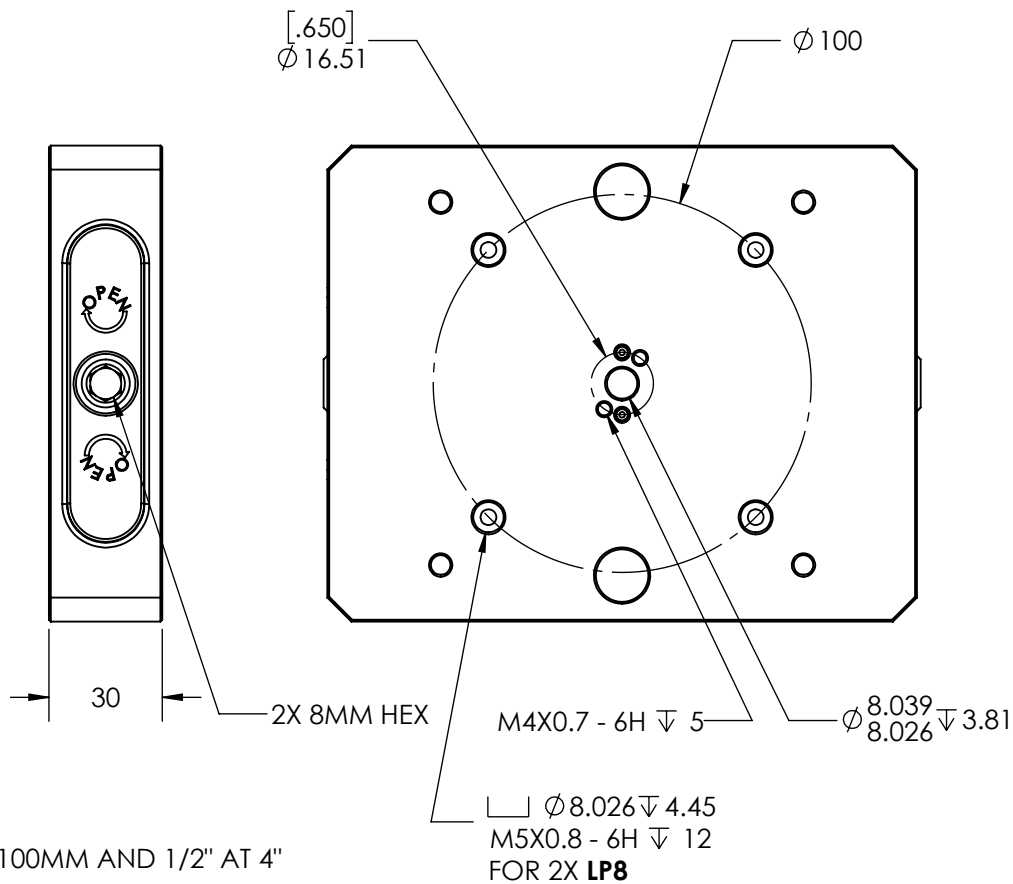
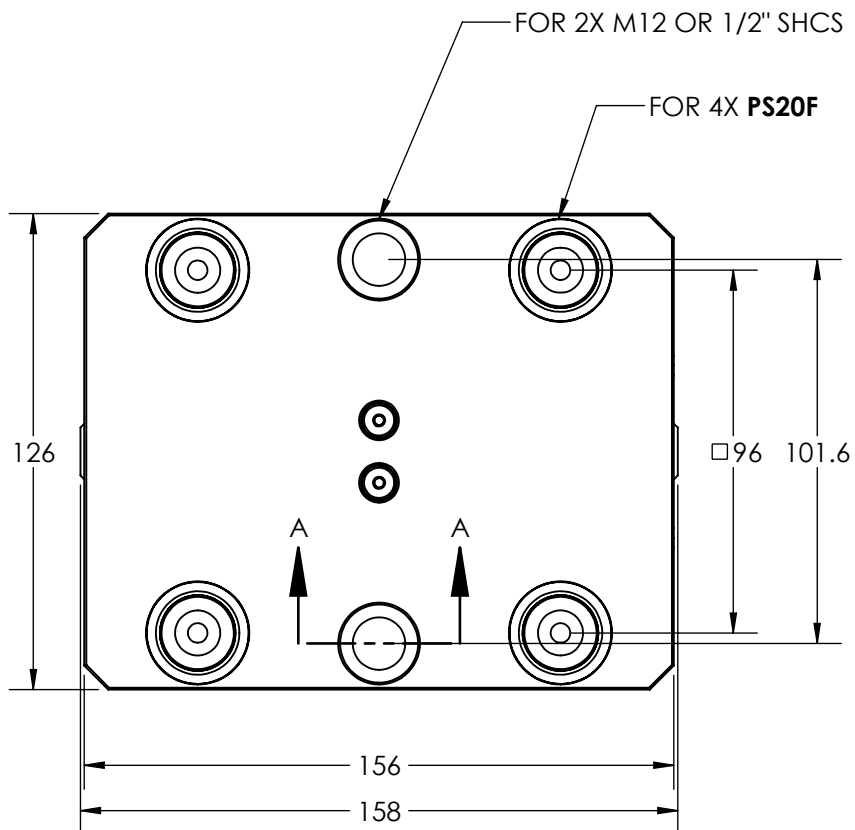
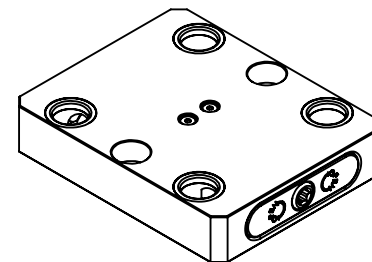


BODY MATERIAL: 6061 ALUMINUM

RL96A-56



SECTION A-A

ENLARGED  TO ALLOW M12 AT 100MM AND 1/2" AT 4"

MILLIMETER

DRAWN IN ACCORDANCE WITH
ASME Y14.5-2009

PROPRIETARY AND CONFIDENTIAL

THE INFORMATION CONTAINED IN THIS
DRAWING IS THE SOLE PROPERTY OF
FIFTH AXIS, INC. ANY REPRODUCTION
IN PART OR AS A WHOLE WITHOUT THE
WRITTEN PERMISSION OF FIFTH AXIS, INC.
IS PROHIBITED.

TOLERANCES UNLESS OTHERWISE SPECIFIED

X \pm 0.1 JXX \pm 0.01
X \pm 0.05 JXX \pm 0.005

ANGULAR \pm 0.5°

THIRD ANGLE PROJECTION

APPROVALS

DRAWN BY
Y. RHEE 07/23/2019

MANUFACTURING

QUALITY
FINAL



WWW.5THAXIS.COM
7140 ENGINEER ROAD
SAN DIEGO, CA 92111
P (858) 505-0432 F (858) 505-9344

DESCRIPTION
RockLock 96mm Low Profile Base, Aluminum, -56

SIZE PART NO. REV
A RL96A-56 A

DO NOT SCALE DRAWING SCALE 1:1 WEIGHT: SHEET 1 OF 1