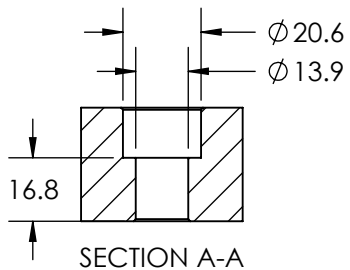
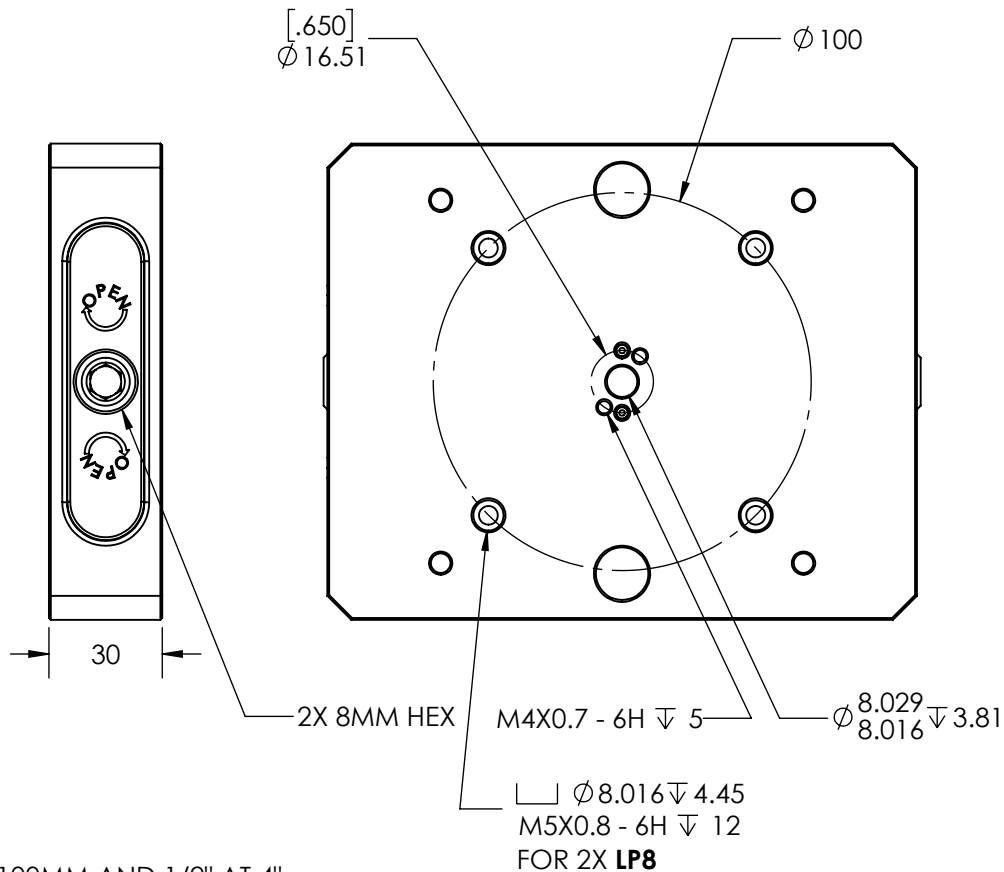
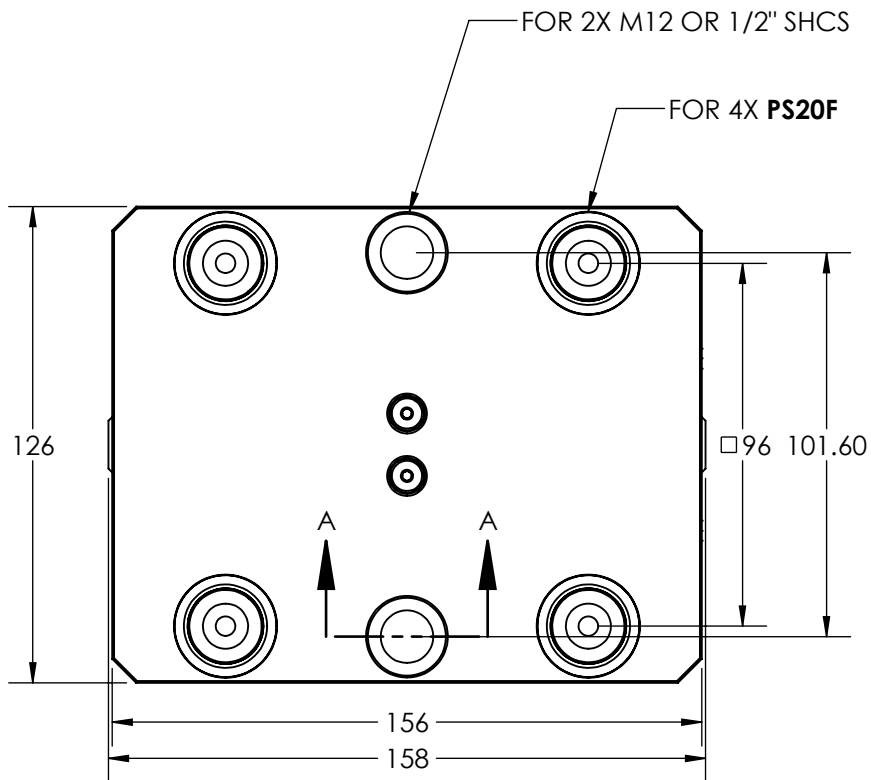
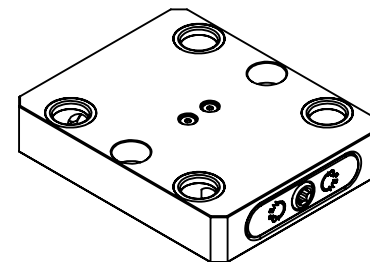


BODY MATERIAL: 1018 STEEL

RL96S-56



ENLARGED  TO ALLOW M12 AT 100MM AND 1/2" AT 4"

MILLIMETER

DRAWN IN ACCORDANCE WITH
ASME Y14.5-2009

PROPRIETARY AND CONFIDENTIAL

THE INFORMATION CONTAINED IN THIS
DRAWING IS THE SOLE PROPERTY OF
FIFTH AXIS, INC. ANY REPRODUCTION
IN PART OR AS A WHOLE WITHOUT THE
WRITTEN PERMISSION OF FIFTH AXIS, INC.
IS PROHIBITED.

TOLERANCES UNLESS OTHERWISE SPECIFIED

X ± 0.1 JXX ± 0.01
X ± 0.05 JXX ± 0.005
ANGULAR ± 0.5°

THIRD ANGLE PROJECTION



APPROVALS

DRAWN BY
Y. RHEE 07/29/2019

MANUFACTURING

QUALITY

FINAL



WWW.5THAXIS.COM
7140 ENGINEER ROAD
SAN DIEGO, CA 92111
P (858) 505-0432 F (858) 505-9344

DESCRIPTION

RockLock 96mm Low Profile Base, Steel, -56

SIZE PART NO.

A

RL96S-56

REV

A

DO NOT SCALE DRAWING

SCALE 1:1

WEIGHT:

SHEET 1 OF 1