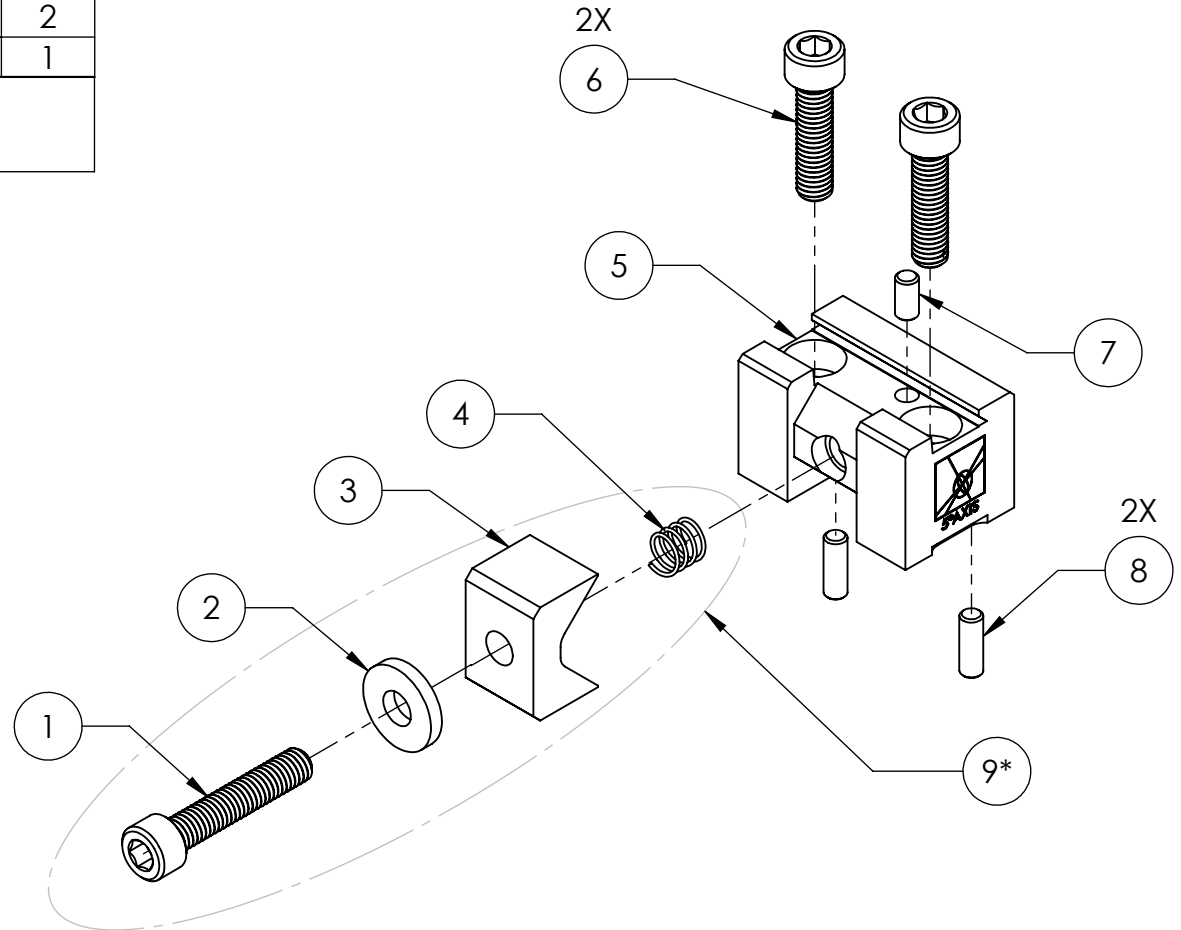
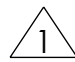


D05125 DOVETAIL FIXTURE		
ITEM NO.	DESCRIPTION	QTY.
1	SHCS, 10-32 X 1"	1
2	FLAT WASHER, #10	1
3	CLAMP, D05125	1
4	SPRING, D05125	1
5	BASE, DOVETAIL FIXTURE	1
6	SHCS, 10-32 X 3/4"	2
7	DOWEL PIN, 1/8" X 1/4"	1
8	DOWEL PIN, 1/8" X 3/8"	2
9*	CLAMP KIT, D05125 (P/N: CA10-R)	1
MINIMUM STOCK SIZE: 1/2" X 1/2"		
MAX TORQUE: 30 IN-LBS		
*INDICATED PARTS SOLD BY 5TH AXIS FOR REPAIR*		

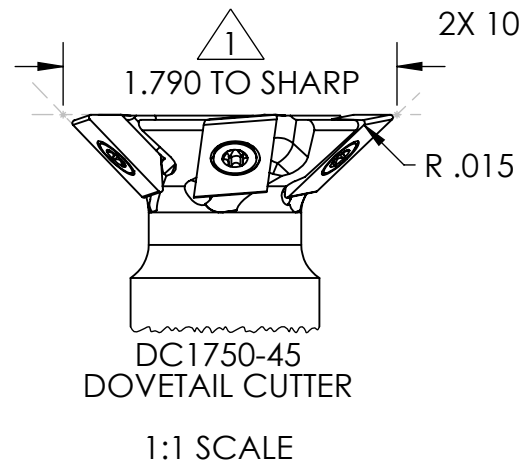
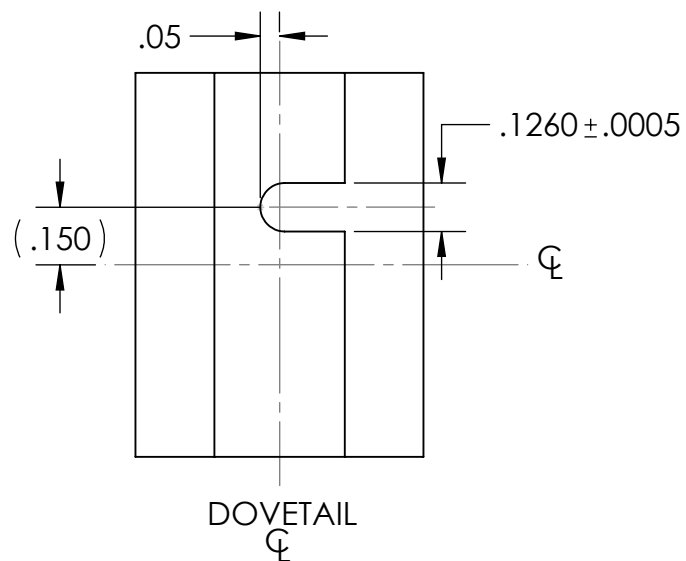
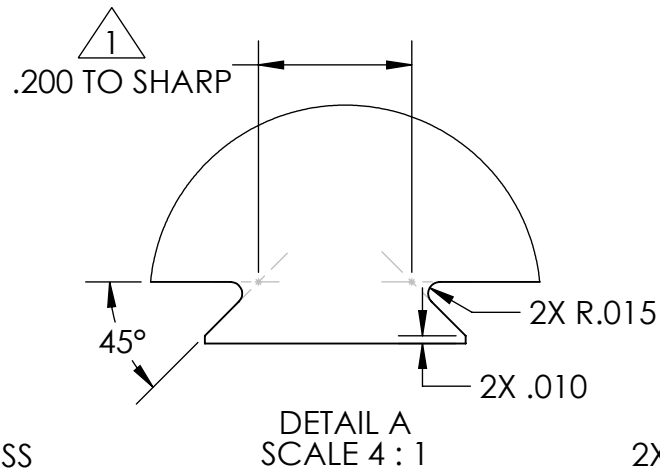
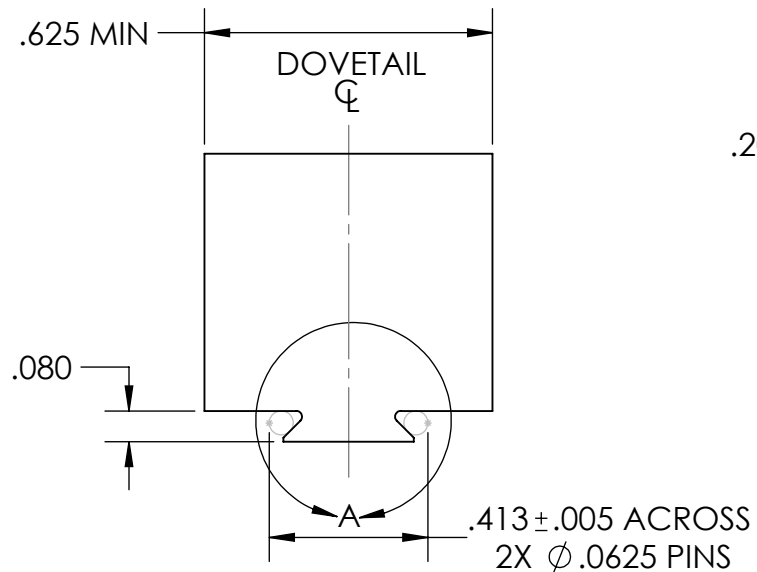

**5<sup>th</sup>AXIS<sup>®</sup>**  
**D05125 DOVETAIL**  
 PARTS ASSEMBLY  
 DRAWING/PARTS LIST  
 STOCK PREP  
 MOUNTING



# DOVETAIL STOCK PREP FOR D05125

 PROGRAM TO THEORETICAL SHARP DOVETAIL (.200) AND CUTTER DIAMETER (1.790 FOR DC1750-45)

## STOCK PREP



## MOUNTING PATTERN

